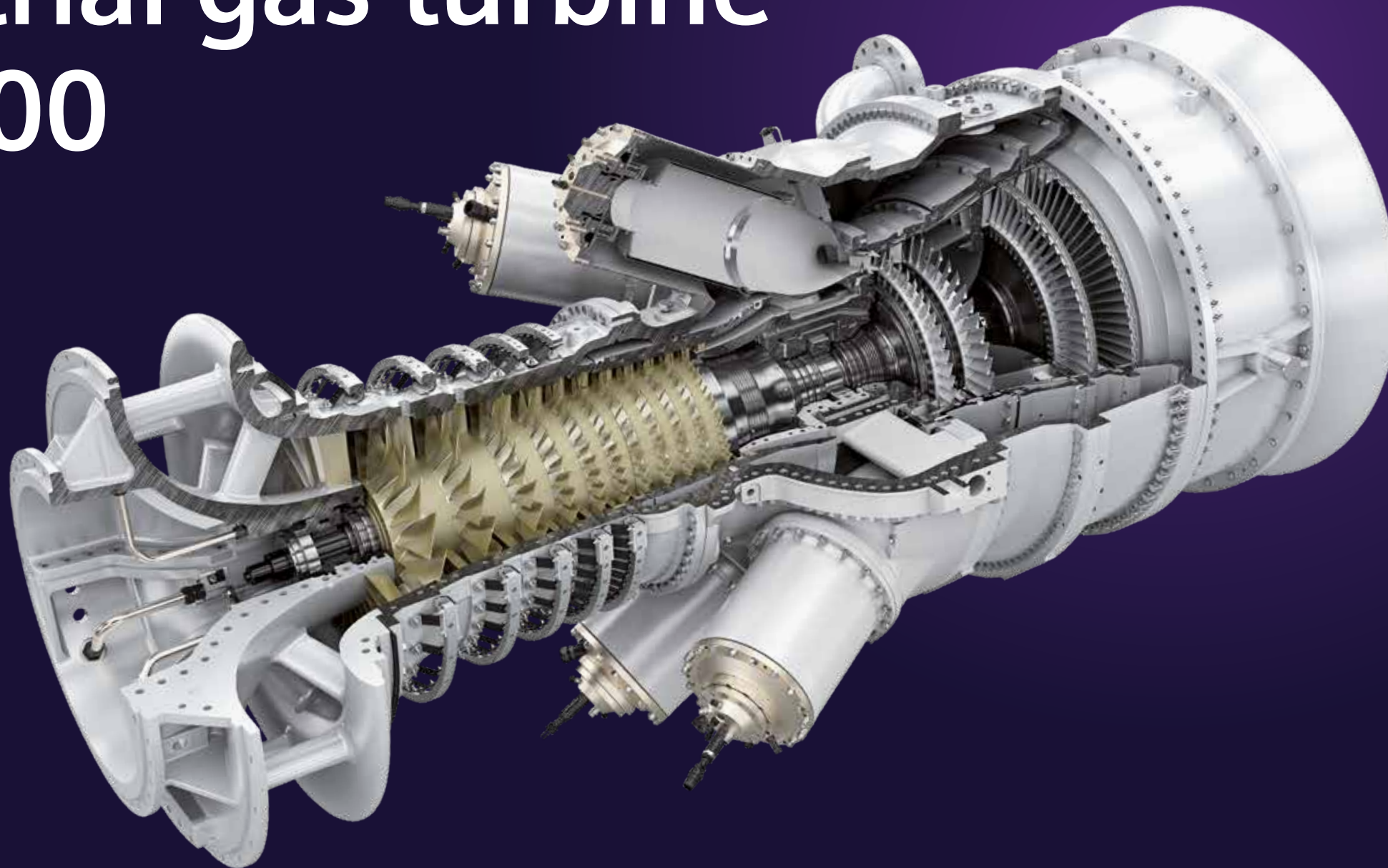


# Industrial gas turbine SGT-400



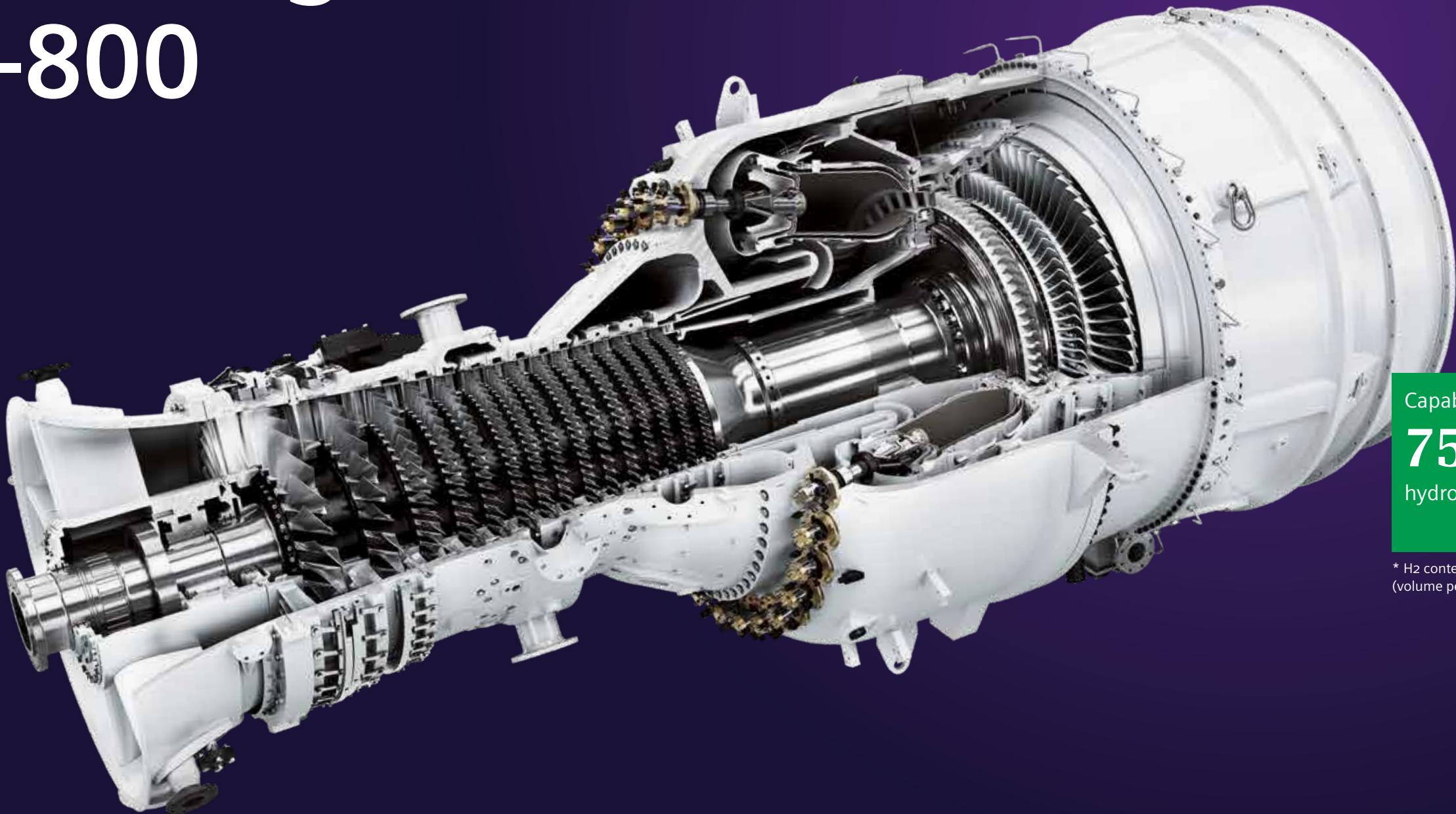
## Power Generation


Power	10.5 MW	12.9 MW	14.3 MW	10.8 MW (14,598 hp)	13.8 MW (18,544 hp)	14.9 MW (20,024 hp)
Gross efficiency	35.4%	34.8%	35.6%	36.8%	36.8%	37.1%
Heat rate	10,173 kJ/kWh (9,638 Btu/kWh)	10,354 kJ/kWh (9,810 Btu/kWh)	10,103 kJ/kWh (9,572 Btu/kWh)	9,774 kJ/kWh (6,908 Btu/hph)	9,790 kJ/kWh (6,919 Btu/hph)	9,702 kJ/kWh (6,857 Btu/hph)
Turbine speed	11,500 rpm	9,500 rpm	9,500 rpm	5,750/12,075 rpm	4,750/9,975 rpm	4,750/9,975 rpm
Pressure ratio	16.1:1	16.9:1	18.5:1	16.1:1	16.9:1	18.5:1
Exhaust mass flow	34.2 kg/s (75.4 lb/s)	40.0 kg/s (88.2 lb/s)	44.5 kg/s (98.1 lb/s)	34.2 kg/s (75.4 lb/s)	40.6 kg/s (89.5 lb/s)	44.5 kg/s (98.1 lb/s)
Exhaust temperature	510°C (950°F)	555°C (1,031°F)	529°C (984°F)	510°C (950°F)	543°C (1,009°F)	529°C (984°F)

## Mechanical Drive



# Industrial gas turbine SGT-800



Capable to burn  
**75%\***  
hydrogen 

\* H2 content in natural gas  
(volume percent)



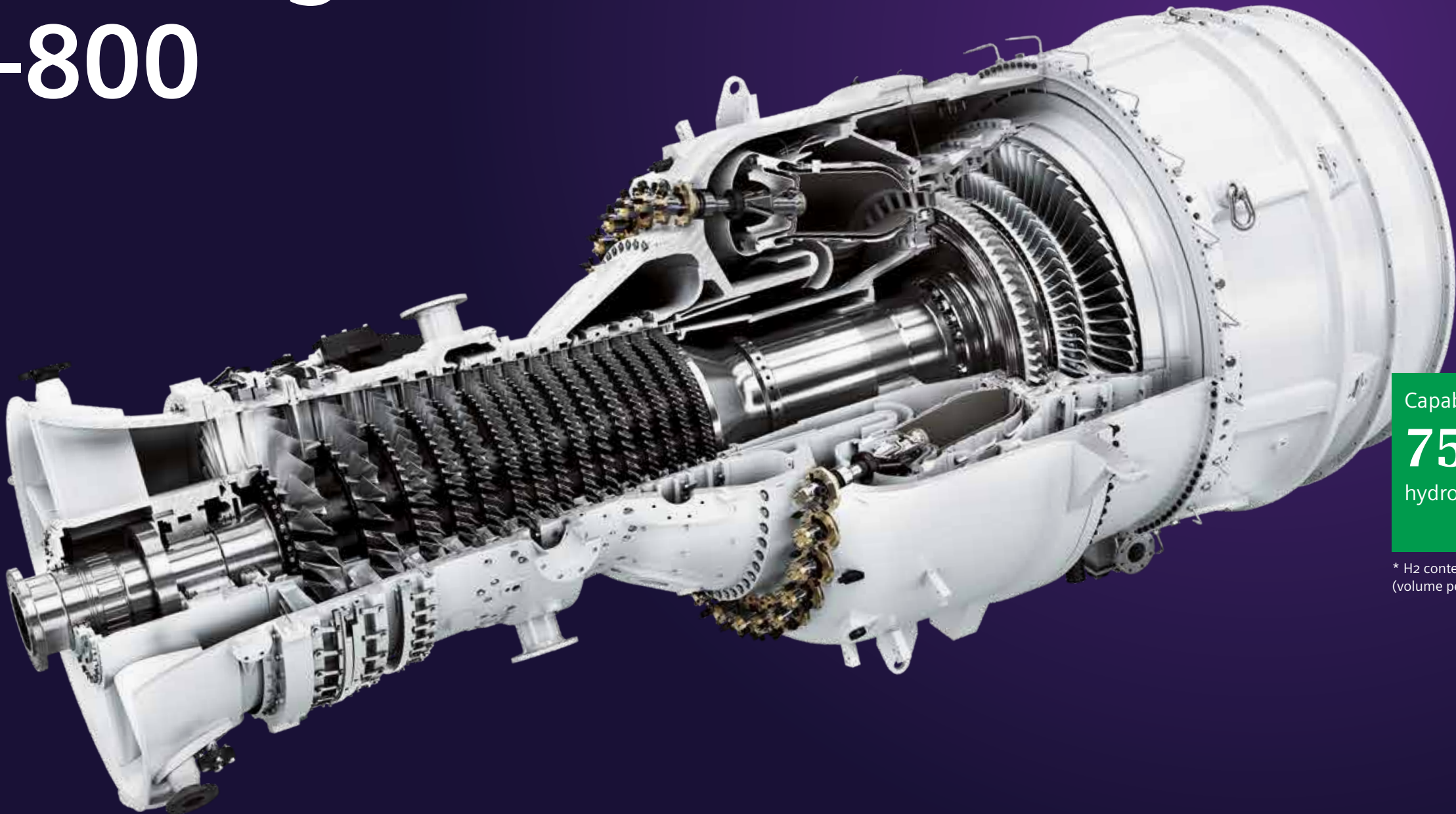
[siemens-energy.com/gasturbines](https://www.siemens-energy.com/gasturbines)


		50 MW	54 MW	56 MW	57 MW	62 MW
Gross efficiency	%	39.4	39.1	39.5	40.1	41.1
Heat rate	kJ / kWh	9,147	9,206	9,123	8,970	8,759
Turbine speed	rpm	6,600	6,600	6,600	6,600	6,600
Pressure ratio		19.8:1	21.6:1	22.0:1	22.0:1	21.1:1
Exhaust mass flow	kg / s	124.7	135.5	137.7	136.6	135.5
Exhaust temperature	°C	560	563	564	565	596

NOTE: All performance values are based on standard design, ISO ambient conditions and natural gas fuel.



# Industrial gas turbine SGT-800



Capable to burn  
**75%\***  
hydrogen 

\* H2 content in natural gas  
(volume percent)



[siemens-energy.com/gasturbines](https://www.siemens-energy.com/gasturbines)

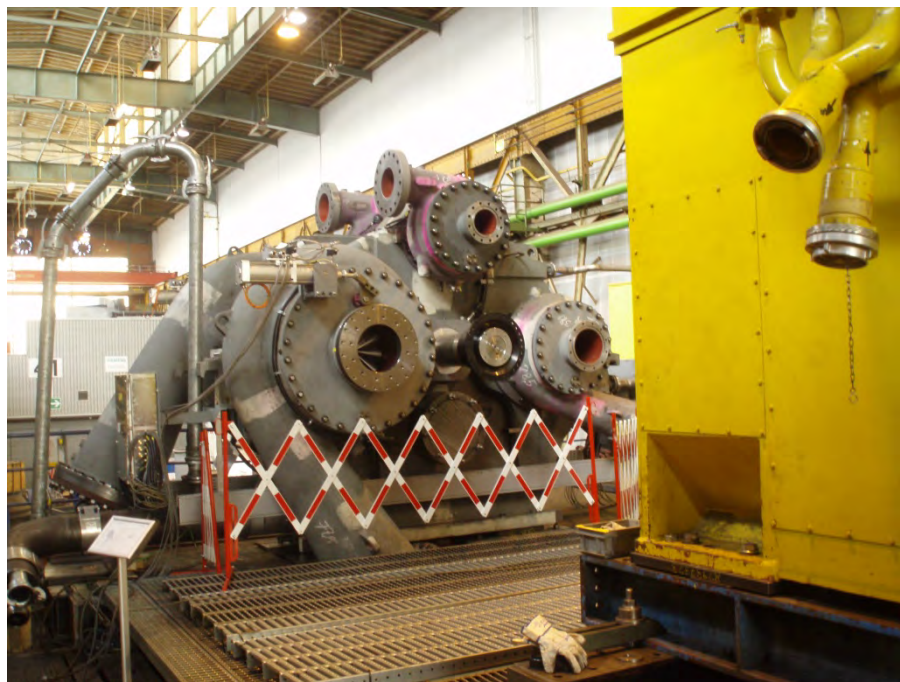
		50 MW	54 MW	56 MW	57 MW	62 MW
Gross efficiency	%	39.4	39.1	39.5	40.1	41.1
Heat rate	Btu / kWh	8,670	8,725	8,647	8,502	8,302
Turbine speed	rpm	6,600	6,600	6,600	6,600	6,600
Pressure ratio		19.8:1	21.6:1	22.0:1	22.0:1	21.1:1
Exhaust mass flow	lb / s	274.9	298.7	303.6	301.1	298.7
Exhaust temperature	°F	1,041	1,045	1,047	1,049	1,104

NOTE: All performance values are based on standard design, ISO ambient conditions and natural gas fuel.

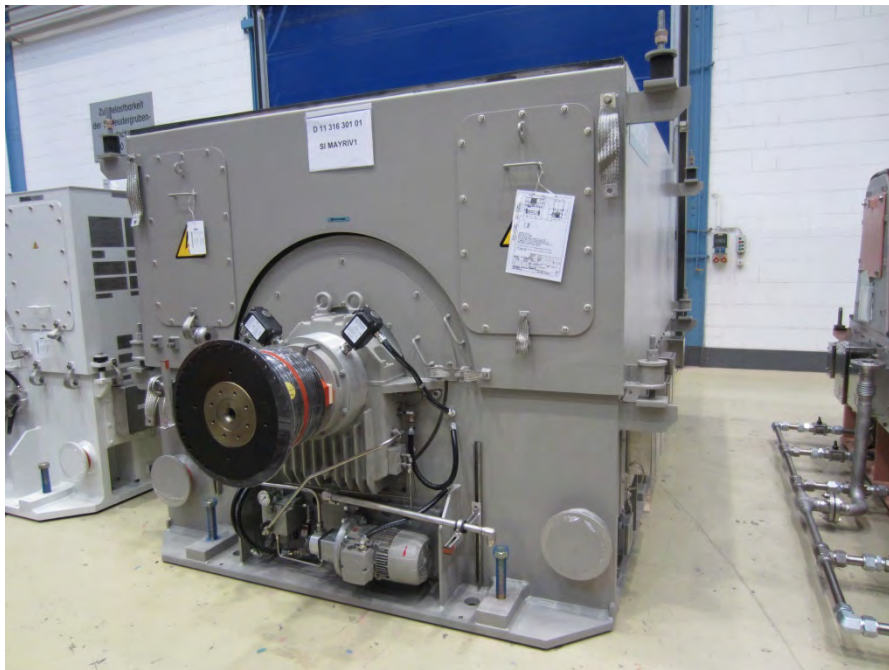












A complex network diagram with numerous nodes and connecting lines, rendered in light gray, serves as the background for the top half of the page. The nodes are of varying sizes and are interconnected by thin lines, creating a web-like structure. The overall color palette is white and light gray, with a dark blue diagonal band at the bottom.

FUNCTIONAL  
& EFFECTIVE MARKETS

**WATER**  
**WASTE**  
**ENERGY**  
**TELECOM**  
ACCESS  
TO FINANCE  
GOVERNMENT  
& MULTILATERAL ORGANISATIONS

CORPORATE FINANCE  
**ADVISORY**

**REGULATORY**  
**REFORMS**

**DCA**

PPP  
FINANCIAL  
& LEGAL STRUCTURE  
**SMART GROWTH**  
EU ACCESSION  
& EMERGING MARKETS  
**TRANSACTIONS**  
**M&A**  
INNOVATIONS

**CAPITAL PROJECTS**  
**& INFRASTRUCTURE**  
REAL ESTATE

**DANUBECA**  
**.COM**





# DANUBE CAPITAL ADVISORS

DANUBE CAPITAL ADVISORS is an advisory top notch boutique distributing Western European / US knowledge combined with CEE transition experience with the best international industry experts on board. Strengthening the cooperation between the EU - EU Accession & Emerging Markets countries with a strong focus on access to finance, by providing regulatory reforms advisory (functional & effective market) in the field of energy pharma, telecom, water and waste focused on industrial diversification and mitigating climate change, promoting state of the art technologies (devices, companies, projects, start-ups, techniques and scientific field) with the aim to contribute to poverty reduction and increased shared prosperity through economic growth, inclusion and sustainable development.

Position (consultancy/supplier):  
Experience in IFI/IGO business:  
**Solutions / Interested in projects:**

consultancy services

yes

**Regulated Industries** with focus on **Energy** for Government / National Regulatory Authorities (3<sup>rd</sup> & 4<sup>th</sup> Energy Package, Unbundling, Strategy, Designing of Market Rules, Implement Regulatory legal framework, energy efficiency, renewables, Nuclear safety & radiation protection policy, standards and MS, EIA assistance, Independent evaluation & improvement & LTO strategies and programmes for NPPs, Decommissioning). **Pharma, Telecom, Water and Waste..**

**Capital Projects & Infrastructure**, we combine engineering and construction experience with business, financial, legal and asset management expertise

**Financing** - advising on optimal **financial and legal structure** incl. marketing materials often exposed to first market sounding, **capital raising** from bilateral lending to large scale multi-source financing involving multilateral financing institutions such as the IFC, EBRD, EIB, IIB, export credit agencies, insurers, commercial banks and capital market bond issuances

## Environmental, Legal and Real Estate Advisory

## INTEREST IN REGIONS

Eastern Europe and the Caucasus	Western Balkans
Africa	Central Europe and Baltic
Central & South Asia	Middle East
North Africa	South-Eastern Europe / Turkey

## GENERAL INFORMATION

Name and legal form:

E-mail contact:

DANUBE Capital Advisors, s.r.o.,  
Venturska 1, SK-81101, Bratislava  
info@danubeca.com

**DANUBECA**  
**.COM**

