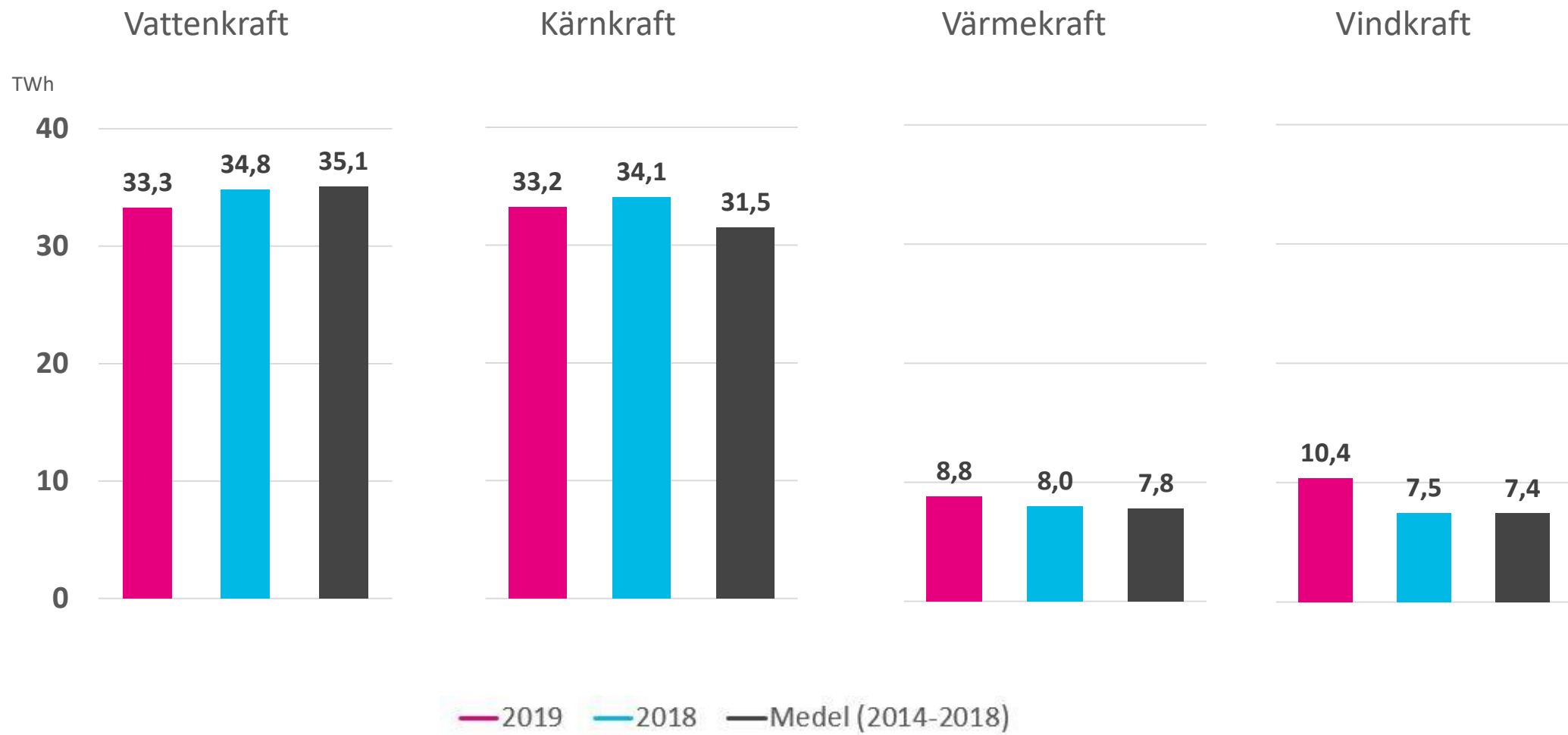
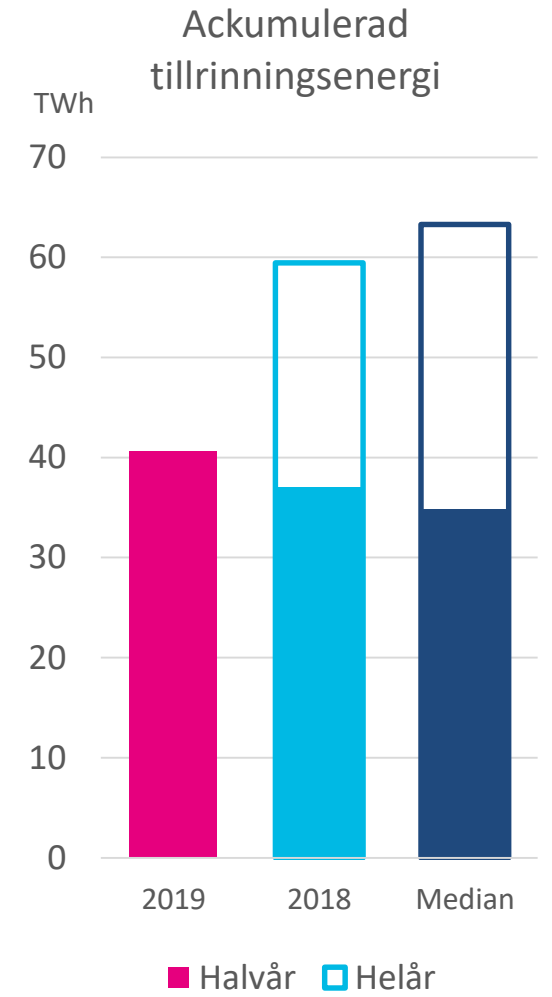
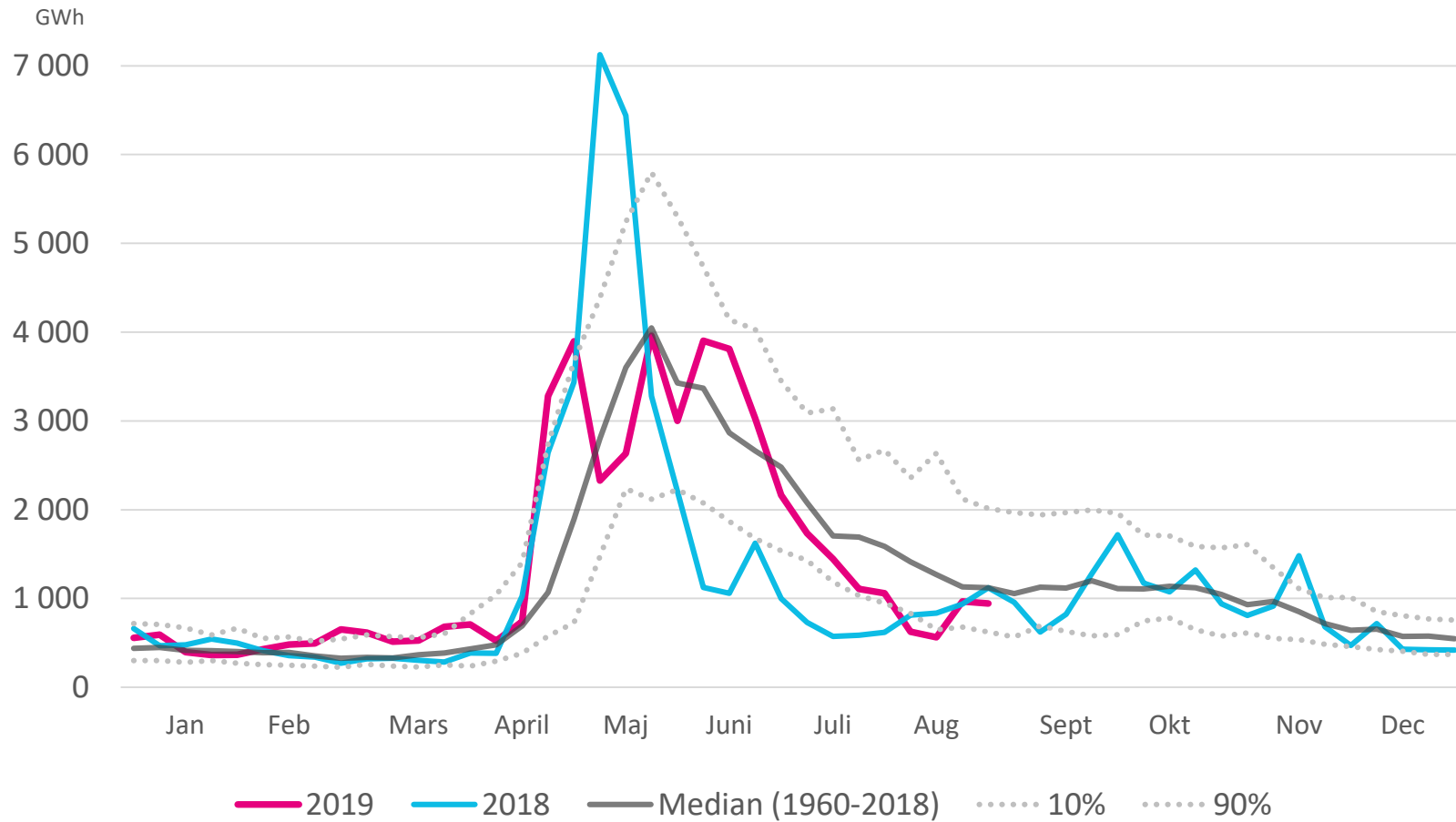


# Elproduktion i Sverige

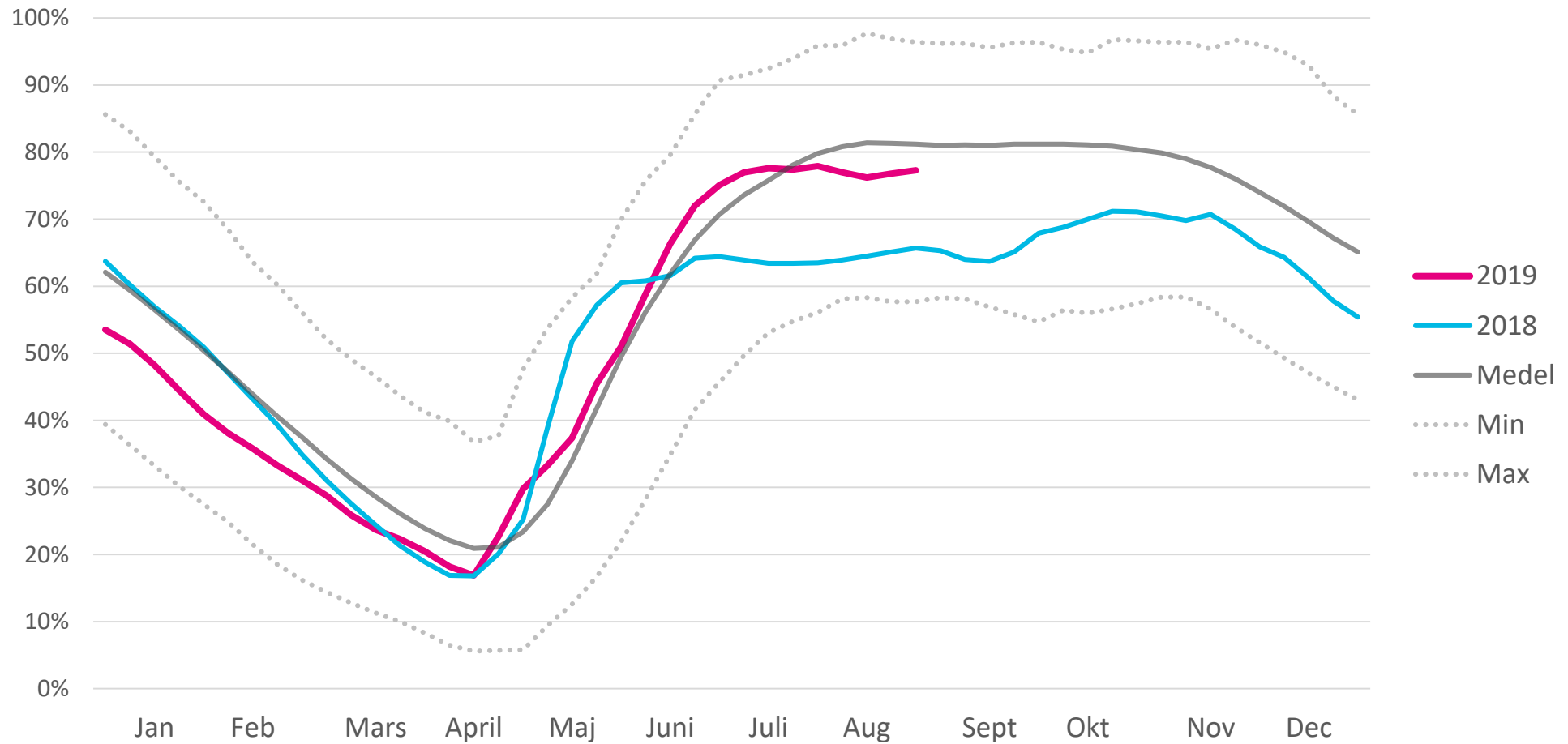
Första halvåret 2019



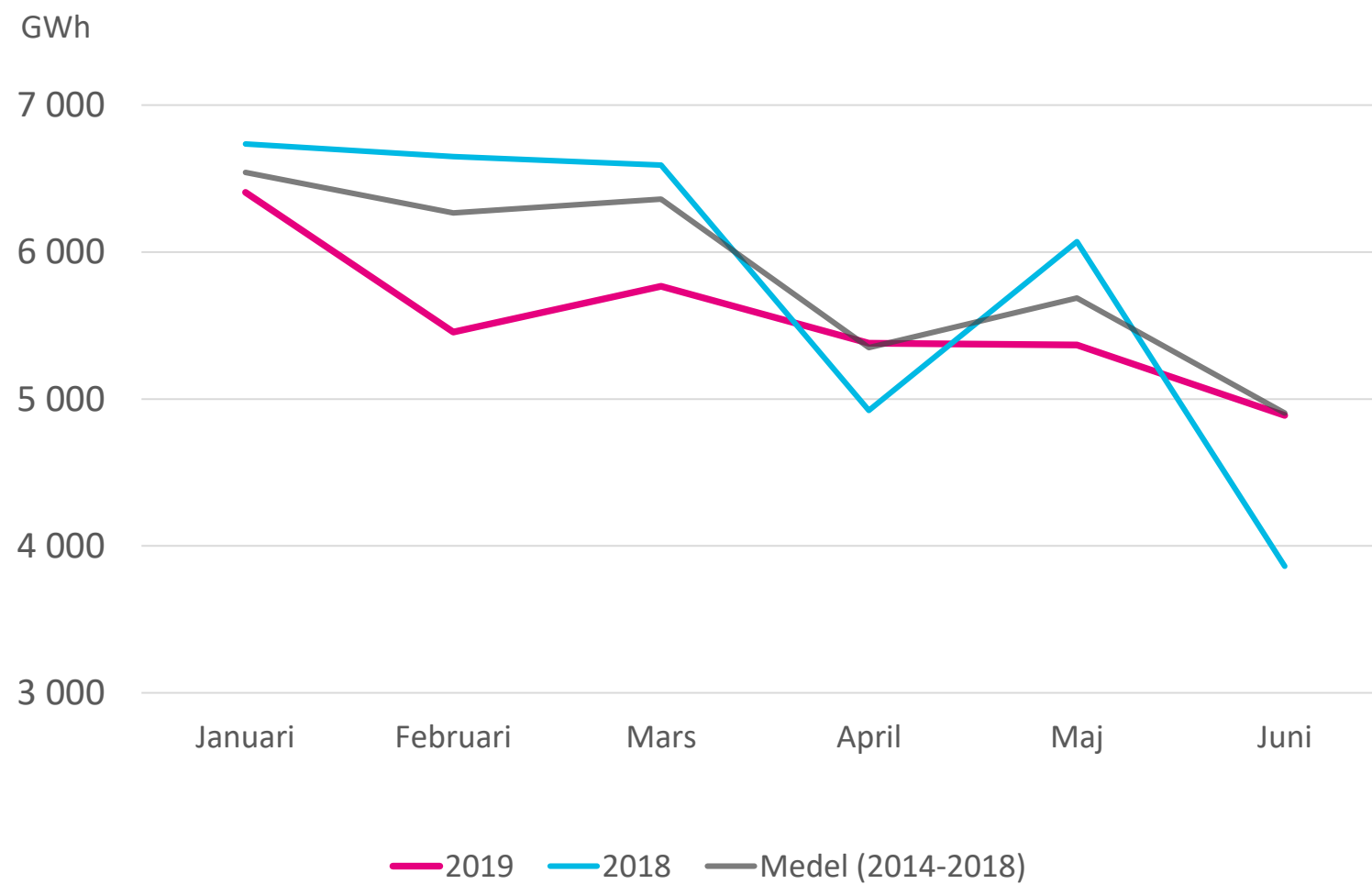
# Tillrinning



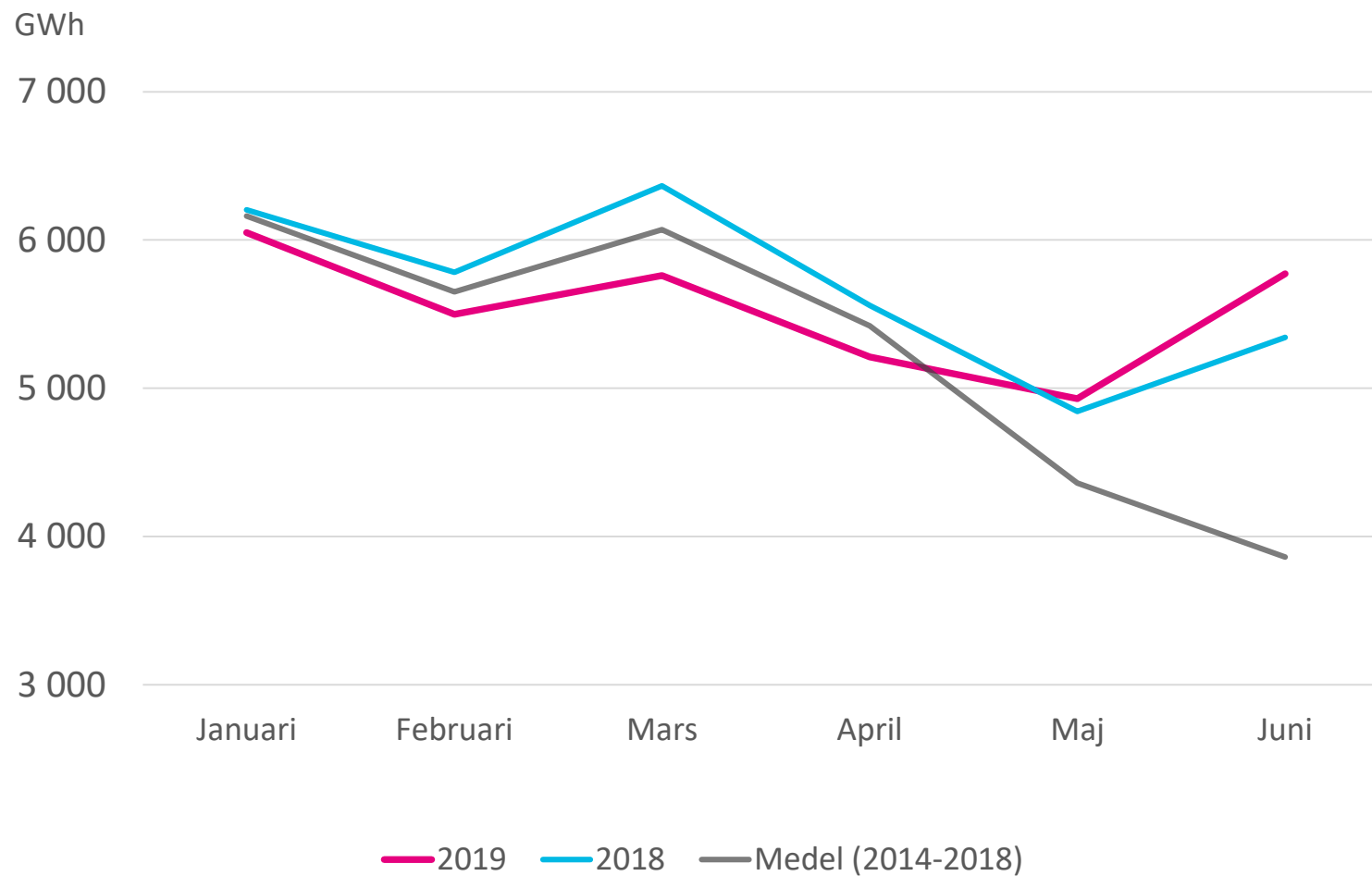
# Magasinsfyllnad



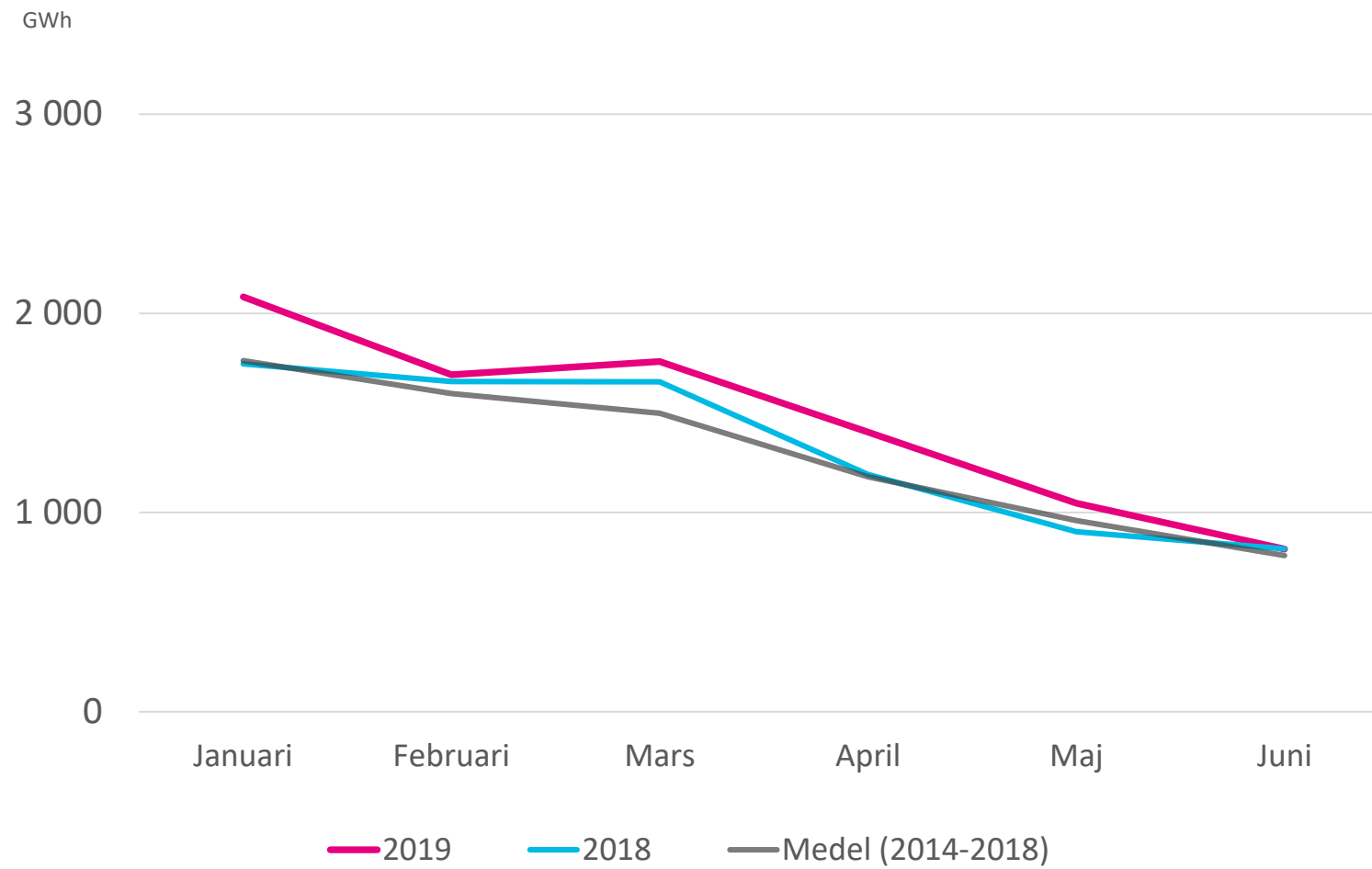
# Vattenkraft



# Kärnkraft

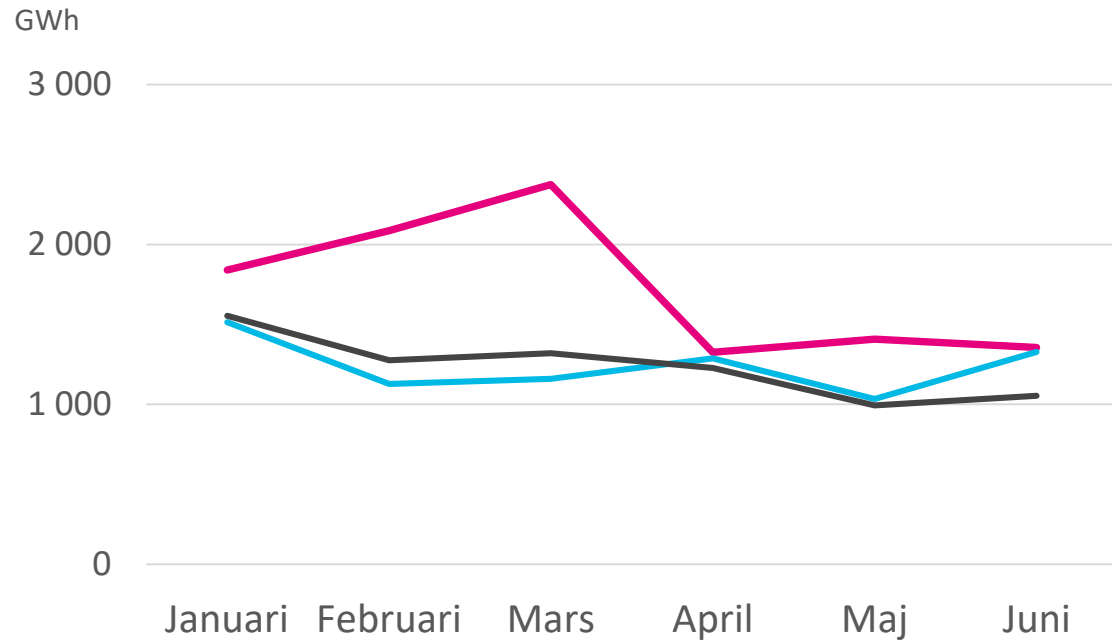


# Värmekraft



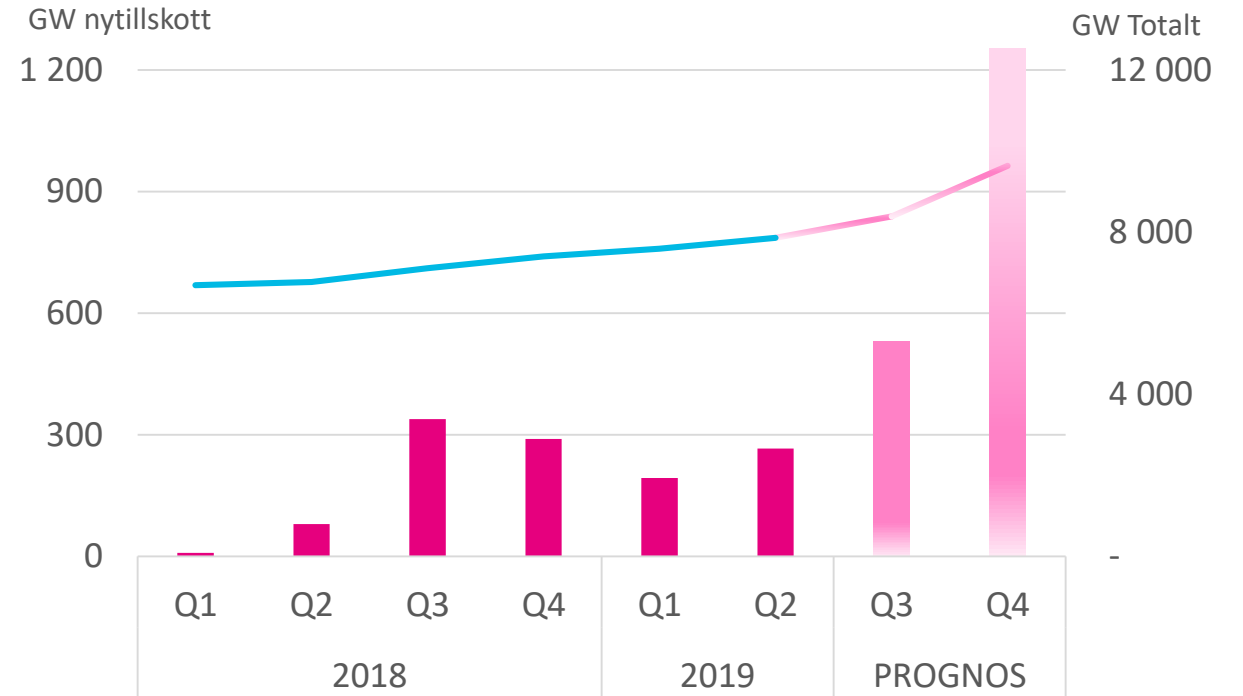
# Vindkraft

## Produktion



— 2019 — 2018 — Medel (2014-2018)

## Installerad effekt

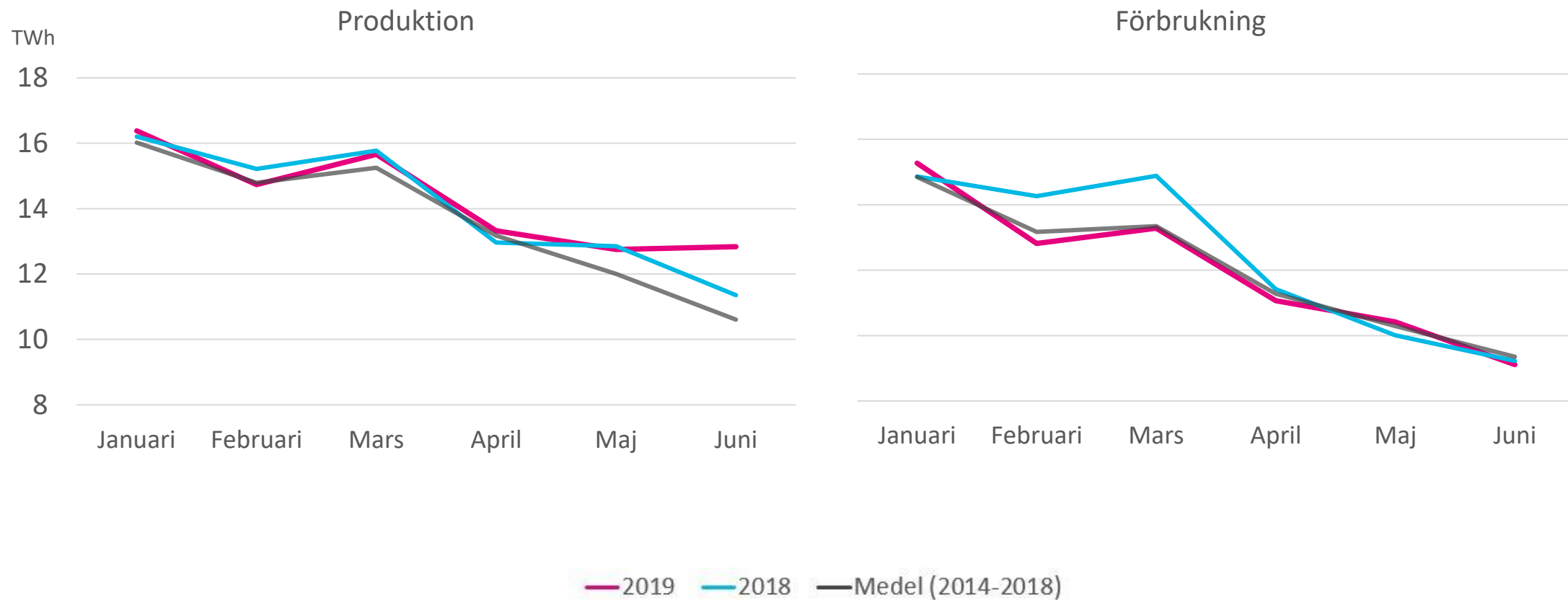


■ Nyttillskott — Total

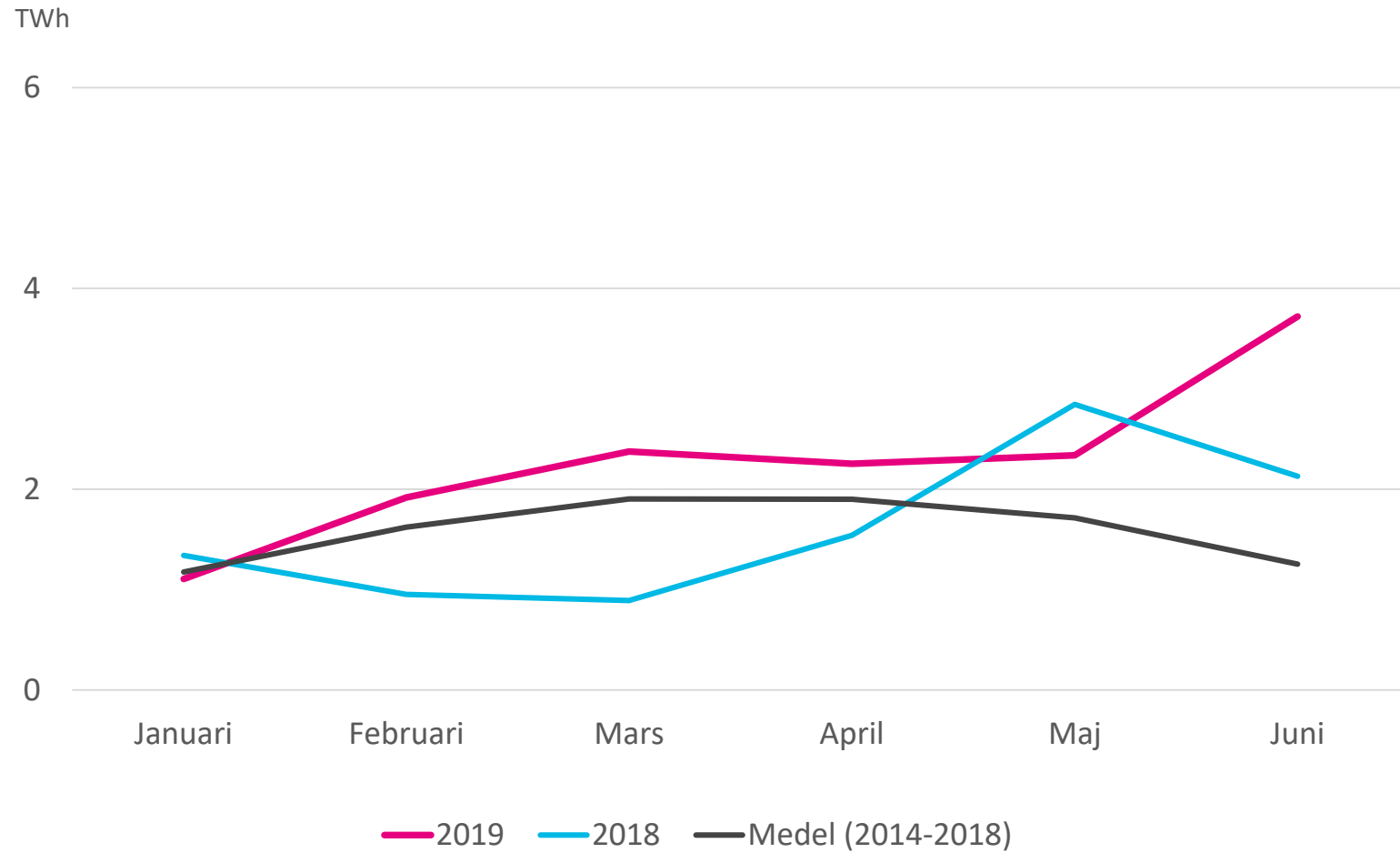
Källa: Svensk vindenergi



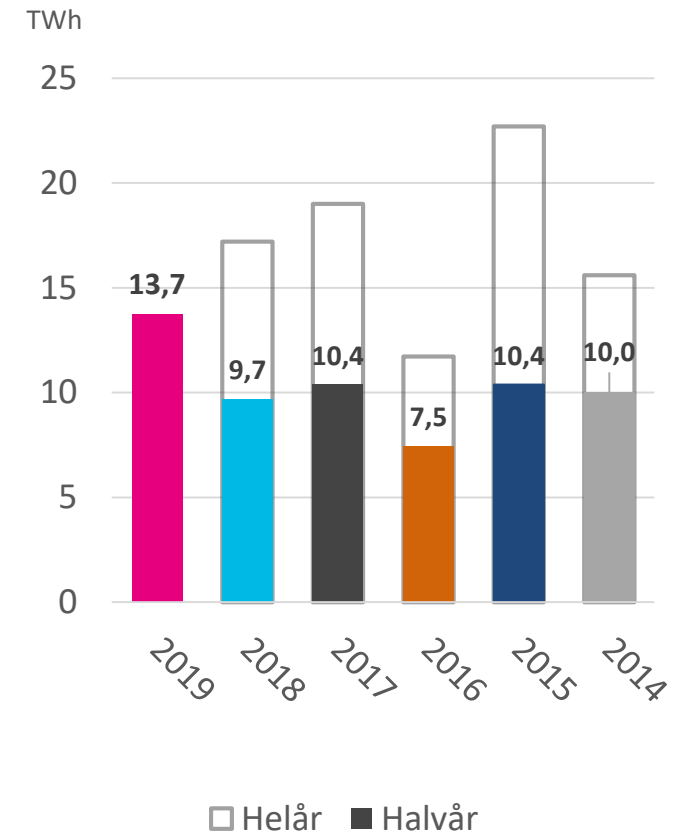
# Total produktion och förbrukning



# Nettoexport

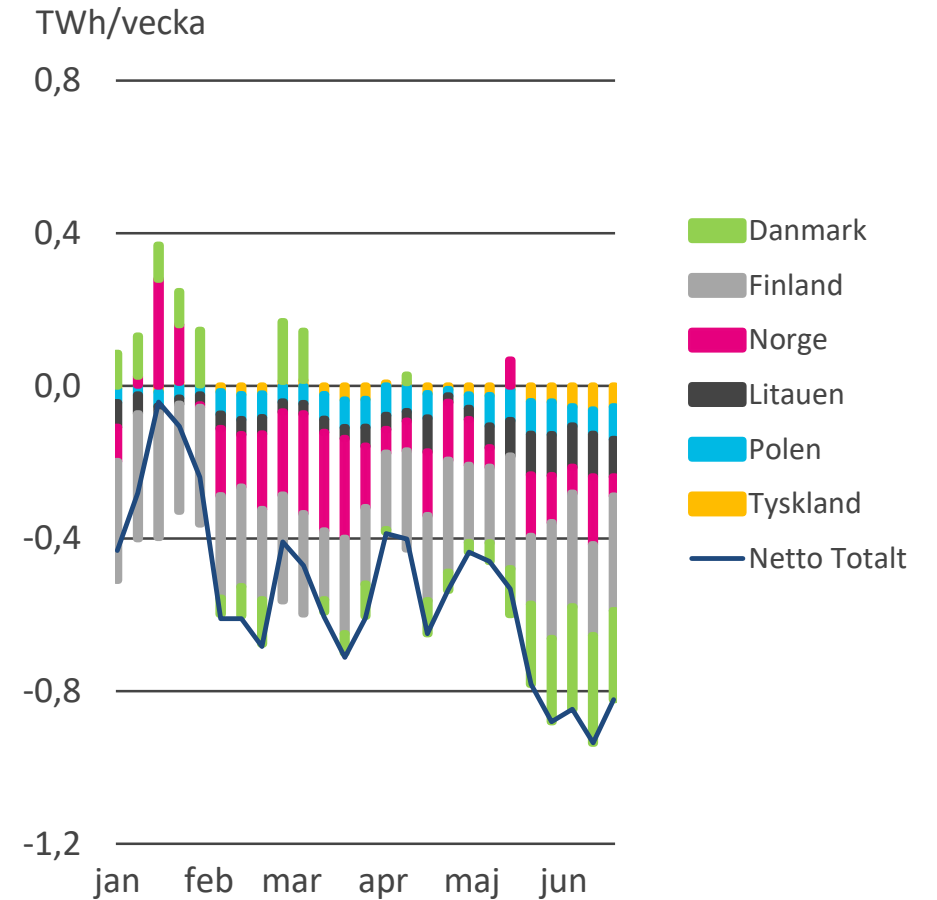
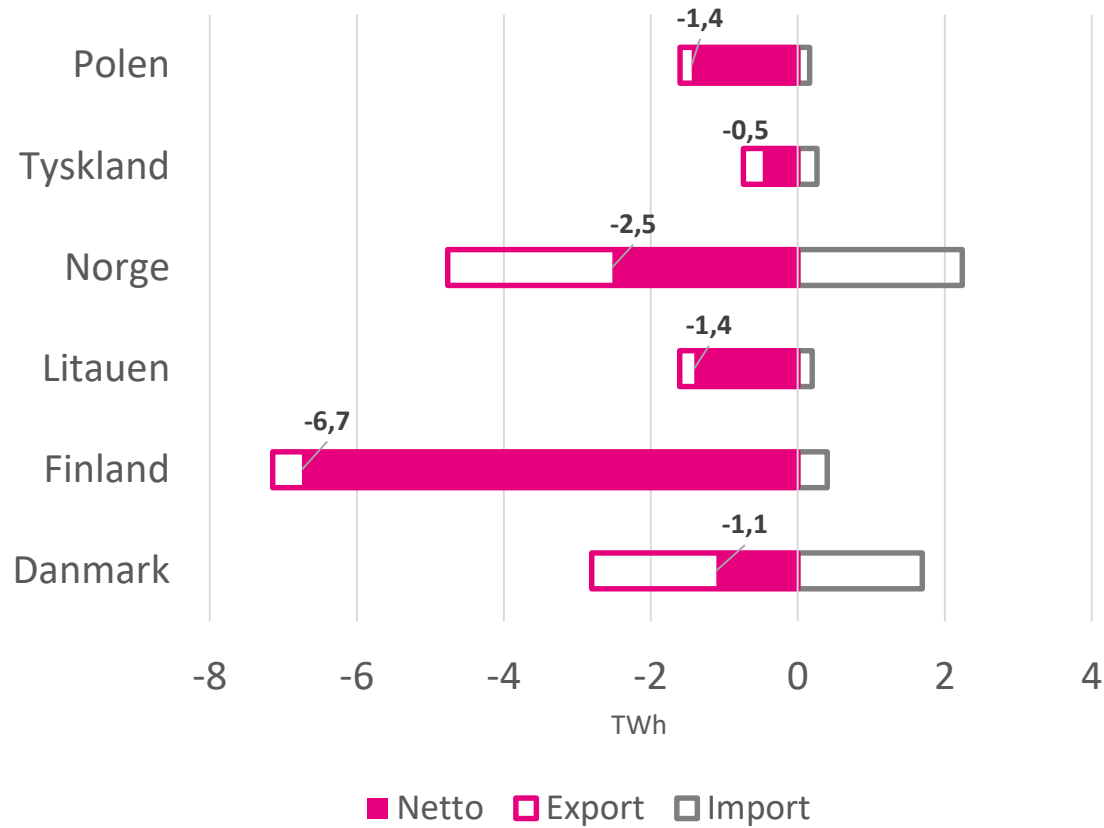


## Akkumulerad nettoexport



Källa: Svenska kraftnät, Energiföretagen

# Kraftutbyten



Källa: Svenska kraftnät, Energiföretagen