

□ Full year value  
■ Through week 28

The estimated energy inflow during week 2019-28 was **1,445 GWh**, which is **85%** of median for the period 1960-2017.

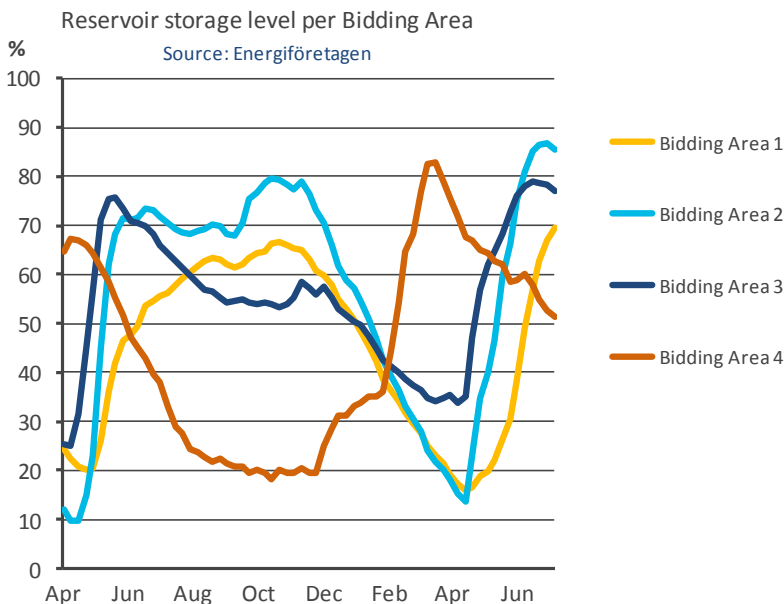
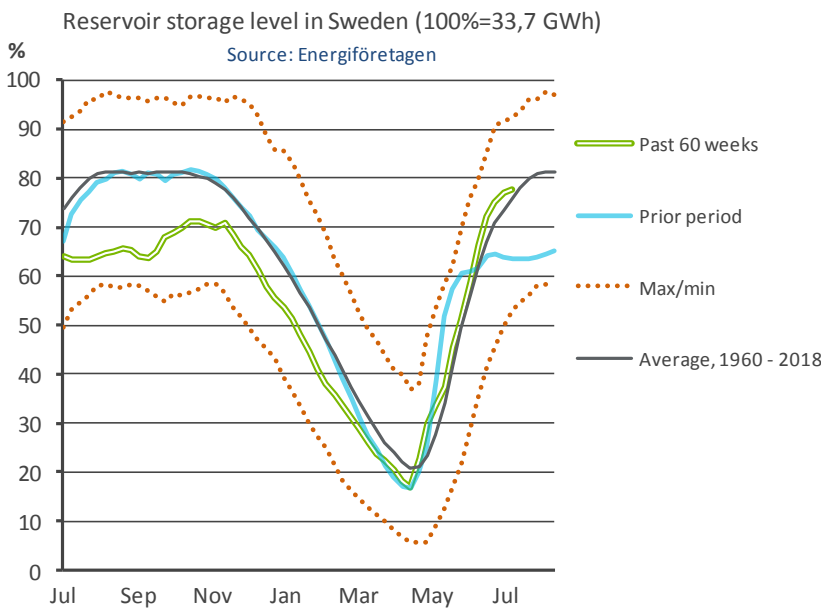
The total energy content in the regulating reservoirs is estimated at **26,124 GWh** this week.

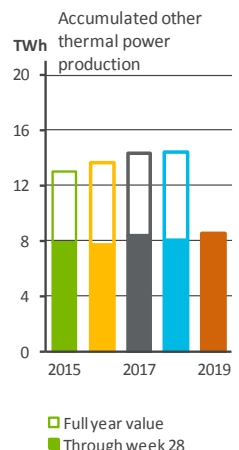
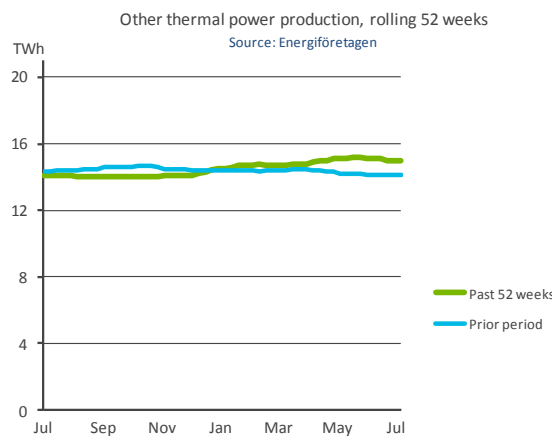
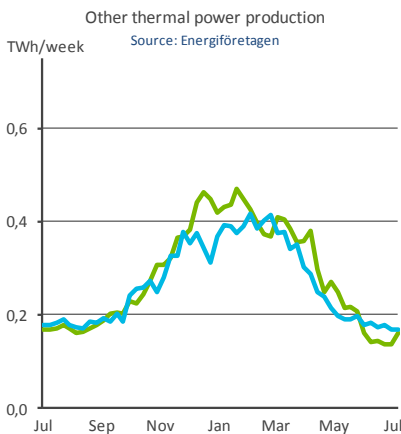
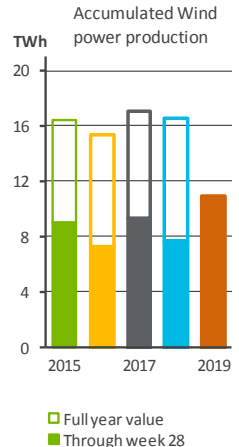
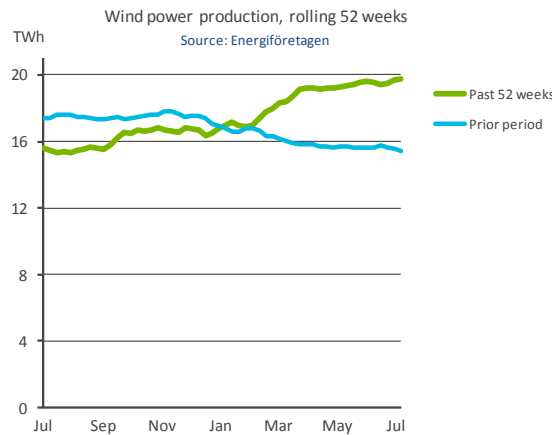
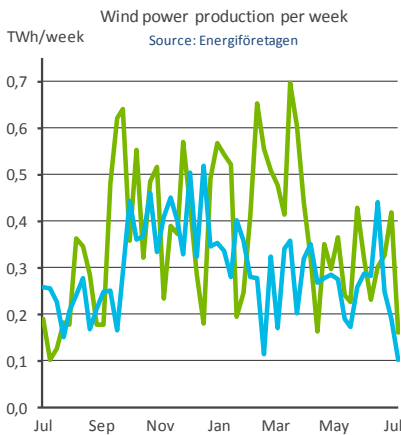
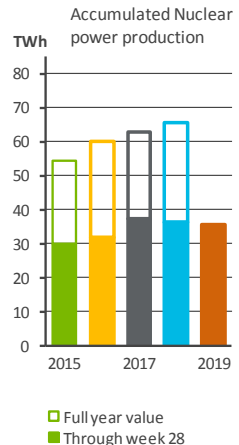
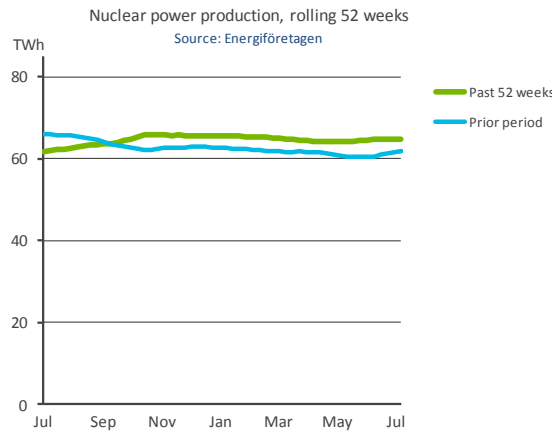
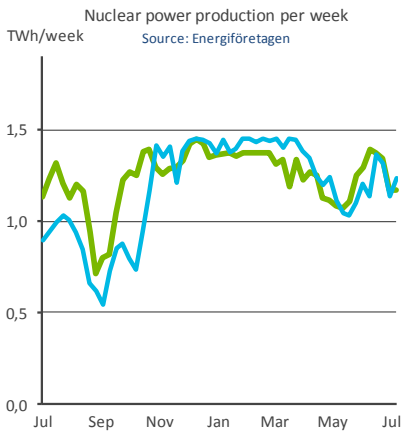
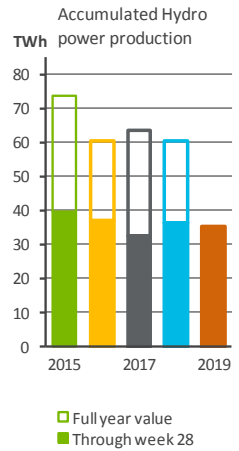
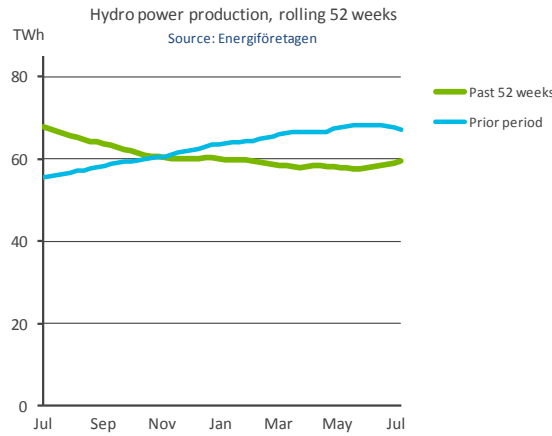
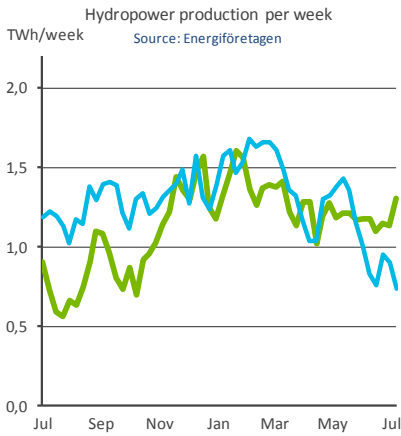
During week 2019-28, the the reservoir storage level has changed from **77.0%** to **77.6%** (at end of week).

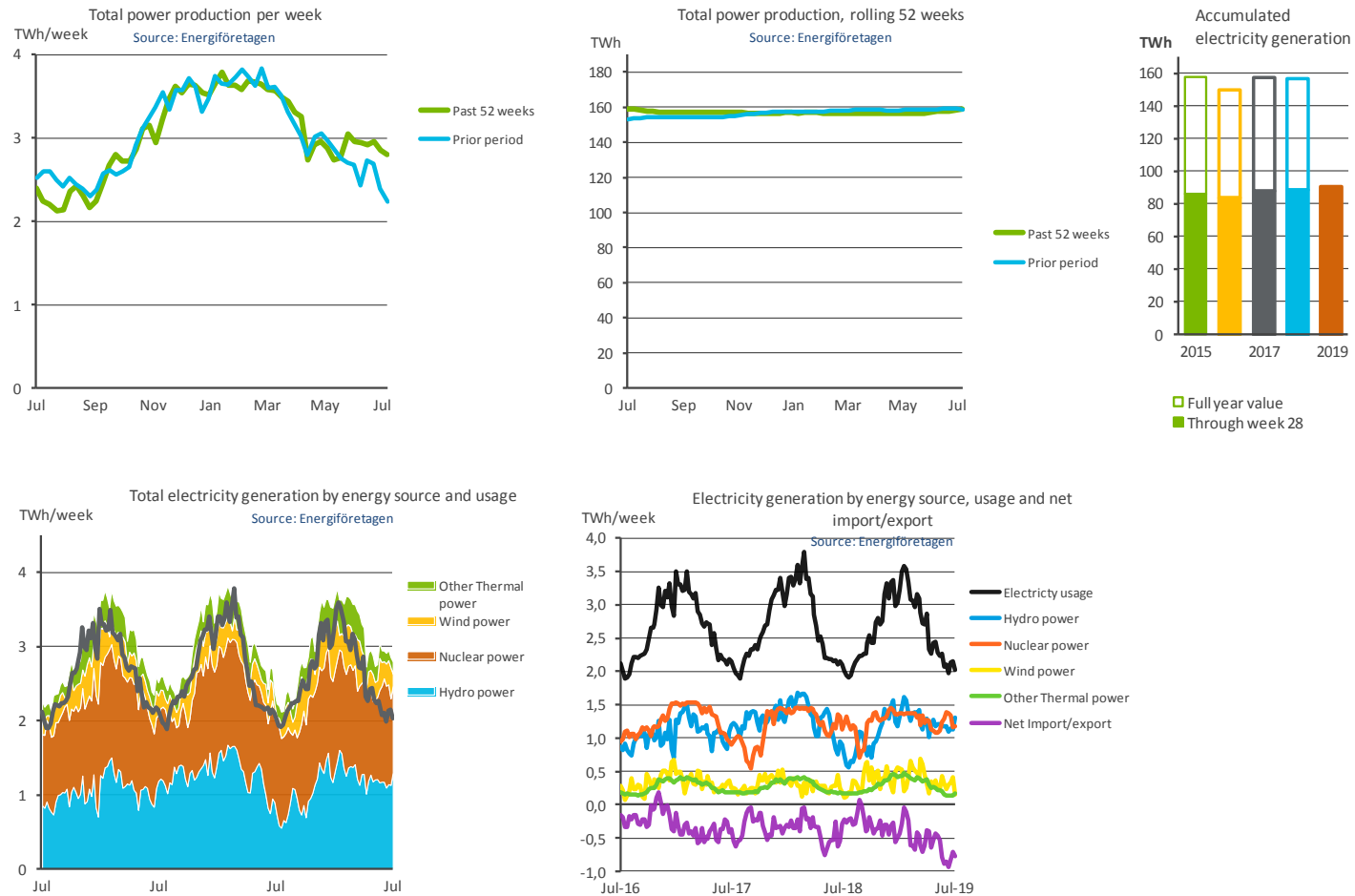
The average reservoir storage level during the period 1960-2017 was **75.8%**.

#### Bidding

Area	Procent	GWh
SE1	69.5	10,293
SE2	85.6	13,468
SE3	77.1	2,248
SE4	51.2	115







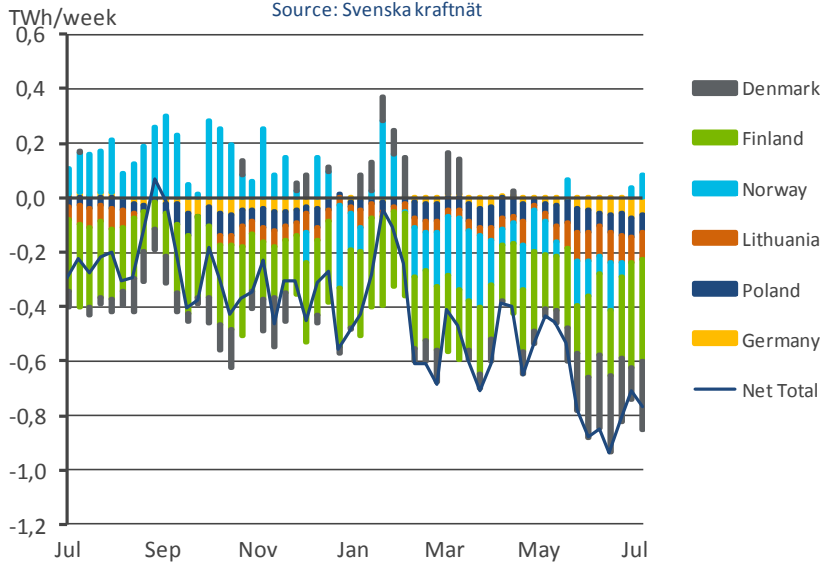
**Table 1  
Sweden**

	Hydropower	Wind power	Nuclear power	Other thermic power	Total production	
2017-27	1,189	258	894	179	2,520	GWh
2017-28	1,221	255	947	179	2,603	GWh
2018-27	904	191	1,134	169	2,397	GWh
2018-28	734	101	1,232	169	2,236	GWh
2019-27	1,135	419	1,168	137	2,859	GWh
<b>2019-28</b>	<b>1,305 (78%)</b>	<b>160 (57%)</b>	<b>1,172 (-5%)</b>	<b>161 (-5%)</b>	<b>2,797 (25%)</b>	<b>GWh</b>
<i>The values in brackets represent the current period in relation to a prior period</i>						
Cum <sup>1</sup> . through w.2017-28	32.5	9.37	37.5	8.4	87.8	TWh
Cum. through w.2018-28	36.3	7.74	36.6	8.1	88.8	TWh
<b>Cum. through w.2019-28</b>	<b>35.5 (-2%)</b>	<b>10.99 (42%)</b>	<b>35.8 (-2%)</b>	<b>8.6 (6%)</b>	<b>90.9 (2%)</b>	<b>TWh</b>
<sup>1</sup> Cumulative sum value from the beginning						
52-weeks <sup>2</sup> total through w. 2017-28	55.8	17.42	65.9	14.3	153.5	TWh
52-weeks total through w. 2018-28	67.2	15.43	61.9	14.1	158.7	TWh
<b>52-weeks total through w. 2019-28</b>	<b>59.5 (-11%)</b>	<b>19.77 (28%)</b>	<b>64.7 (5%)</b>	<b>15.0 (6%)</b>	<b>159.0 (0%)</b>	<b>TWh</b>
<sup>2</sup> Rolling annual value total of 52 weeks						

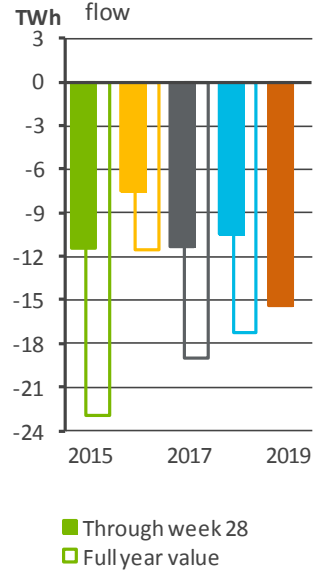
## Electricity exchange with neighboring countries

Net import/export with countries outside Sweden

Source: Svenska kraftnät

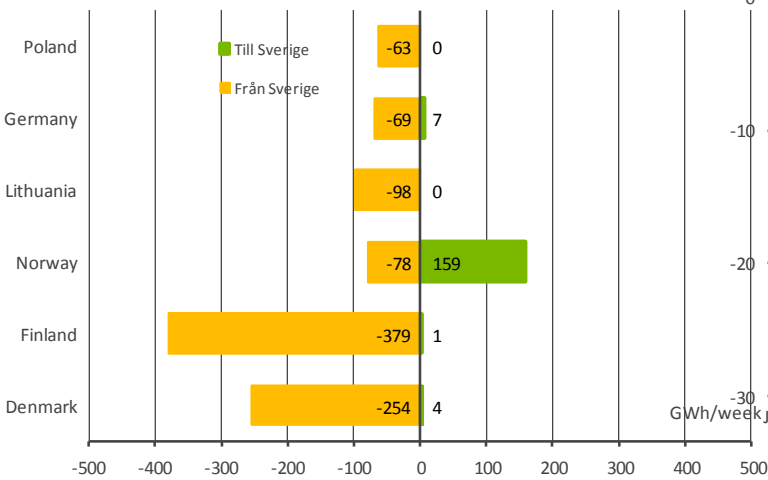


Total accumulated net flow



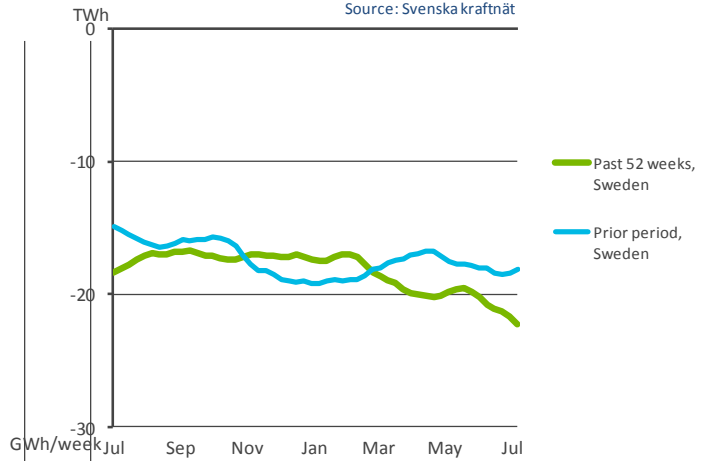
Import/export with countries outside Sweden

Source: Svenska kraftnät

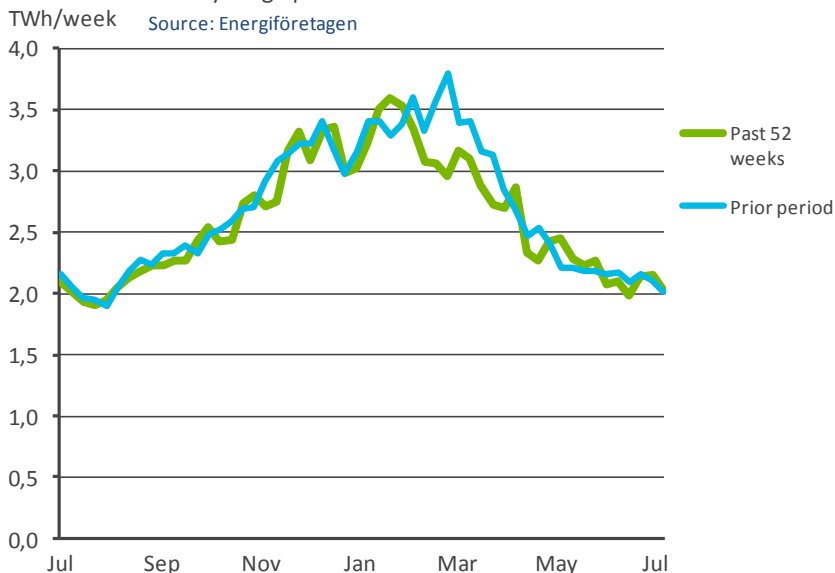


Net import/export with countries outside Sweden

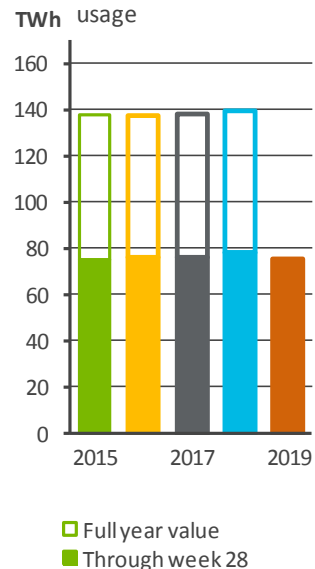
Source: Svenska kraftnät



Electricity usage per week



Accumulated electricity usage



Electricity usage, rolling 52 weeks

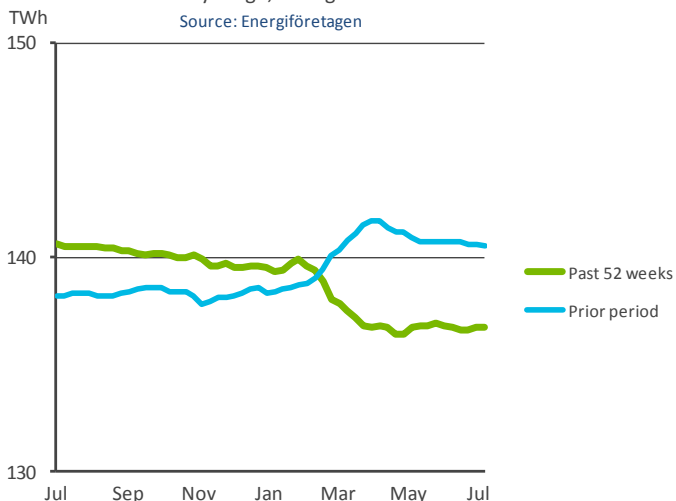
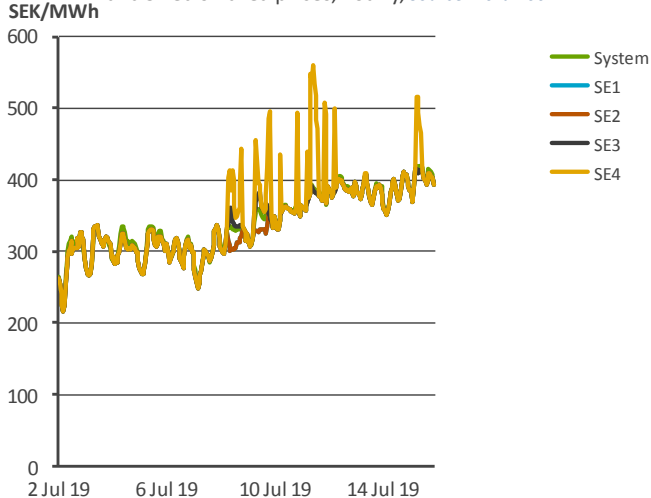


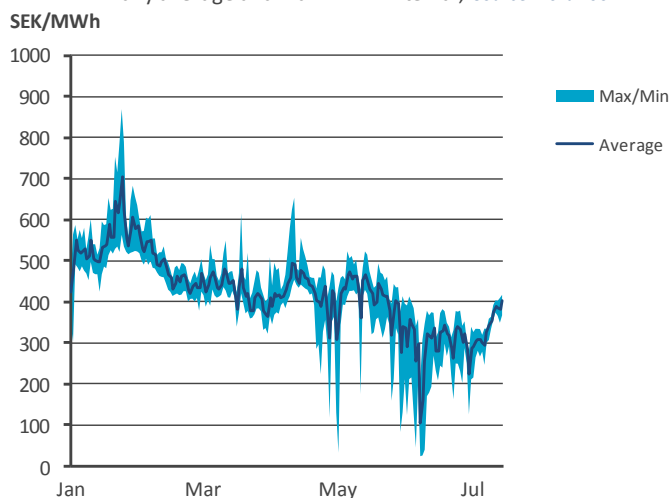
Table 2  
Sweden

	Total	Net import/export	Domestic usage		
			Result	Temp-adj.	
2017-27	2,520	-368	2,152	2,084	GWh
2017-28	2,603	-546	2,057	2,045	GWh
2018-27	2,397	-294	2,103	2,103	GWh
2018-28	2,236	-225	2,011	2,011	GWh
2019-27	2,859	-707	2,152	2,022	GWh
<b>2019-28</b>	<b>2,797 (25%)</b>	<b>-770 (242%)</b>	<b>2,027 (1%)</b>	<b>2,027 (1%)</b>	<b>GWh</b>
<i>The values in brackets represent the current period in relation to a prior period</i>					
Cum <sup>1</sup> . through w.2017-28	87.8	-11.3	76.5	79.8	TWh
Cum. through w.2018-28	88.8	-10.4	78.4	81.7	TWh
<b>Cum. through w.2019-28</b>	<b>90.9 (2%)</b>	<b>-15.4 (48%)</b>	<b>75.5 (-4%)</b>	<b>79.7 (-2%)</b>	<b>TWh</b>
<sup>1</sup> Cumulative sum value from the beginning					
52-weeks <sup>2</sup> total through w. 2017-:	153.5	-15.2	138.2	143.3	TWh
52-weeks total through w. 2018-2	158.7	-18.1	140.5	145.2	TWh
<b>52-weeks total through w. 2019-:</b>	<b>159.0 (0%)</b>	<b>-22.3 (23%)</b>	<b>136.7 (-3%)</b>	<b>142.8 (-2%)</b>	<b>TWh</b>
<sup>2</sup> Rolling annual value total of 52 weeks					

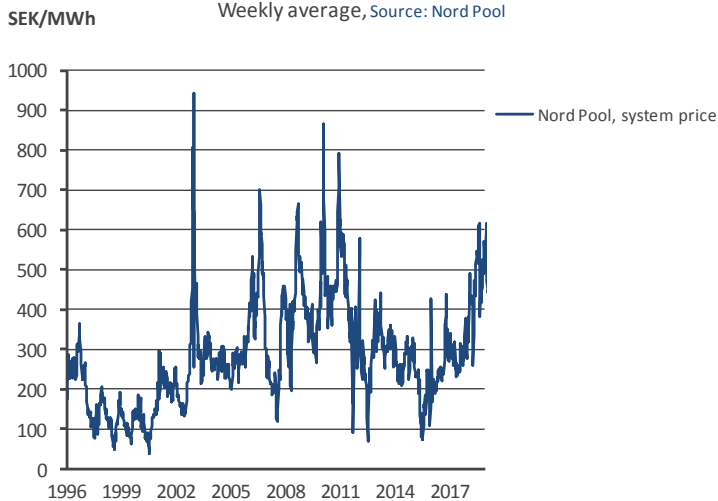
Espot system price on Nord Pool exchange and Swedish area prices, hourly, Source: Nord Pool



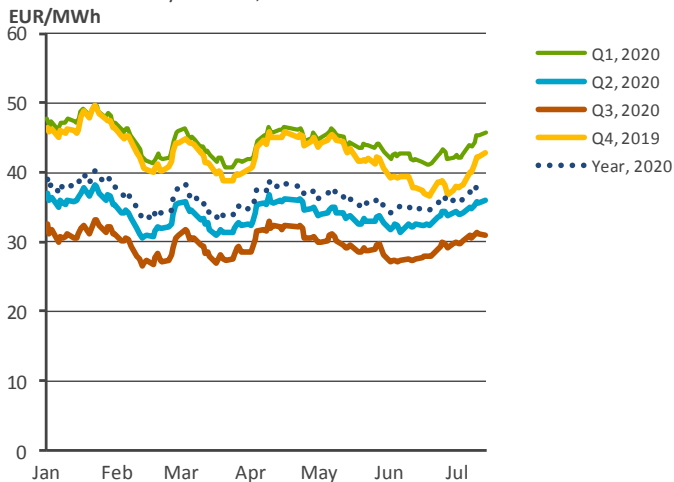
Espot system price on Nord Pool exchange Daily average and max. - min. interval, Source: Nord Pool



Espot system price on Nord Pool exchange Weekly average, Source: Nord Pool



NASDAQ Commodities forward price by quarter 2019 and full year 2020, Source: NASDAQ Commodities

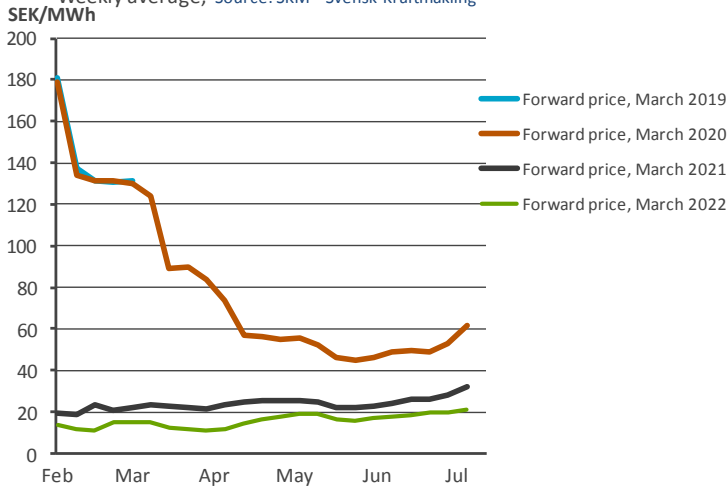


Trade with carbon emission allowances Price, EUR/EUA Source: NASDAQ Commodities



SKM E-certificate forward prices

Weekly average, Source: SKM – Svensk Kraftmätning

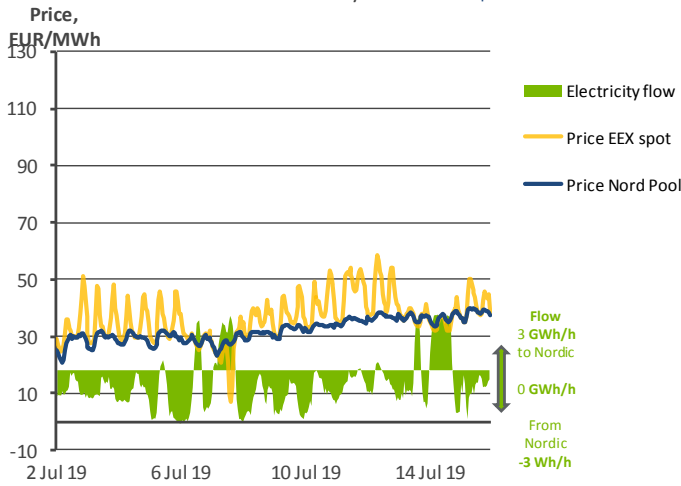


SKM E-certificate spot price

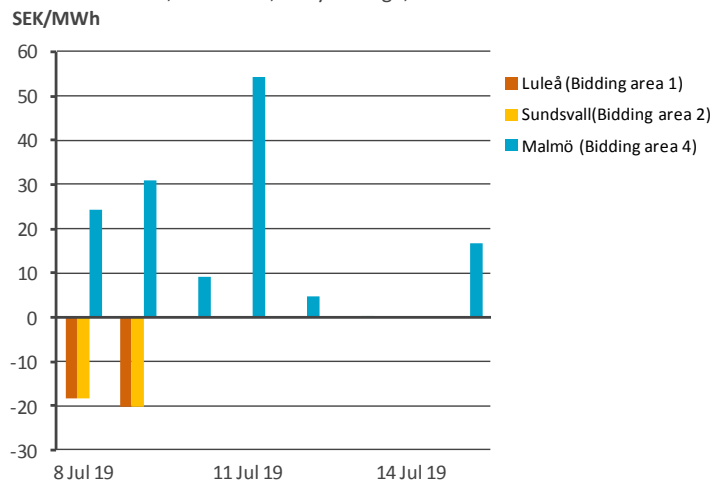
Weekly average, Source: SKM – Svensk Kraftmätning



EEX and Nord Pool, price and Nordic electricity flow to and from Germany Source: EPEX Spot and Nord Pool



Areas prices compared to Area SE3, Stockholm, daily average, Source: Nord Pool



NASDAQ, Swedish EPAD contract year 2020

difference between the area the system price Source: NASDAQ

